



SUPPORTED BY  
MAYOR OF LONDON

# Smarter Cities Through Collaboration

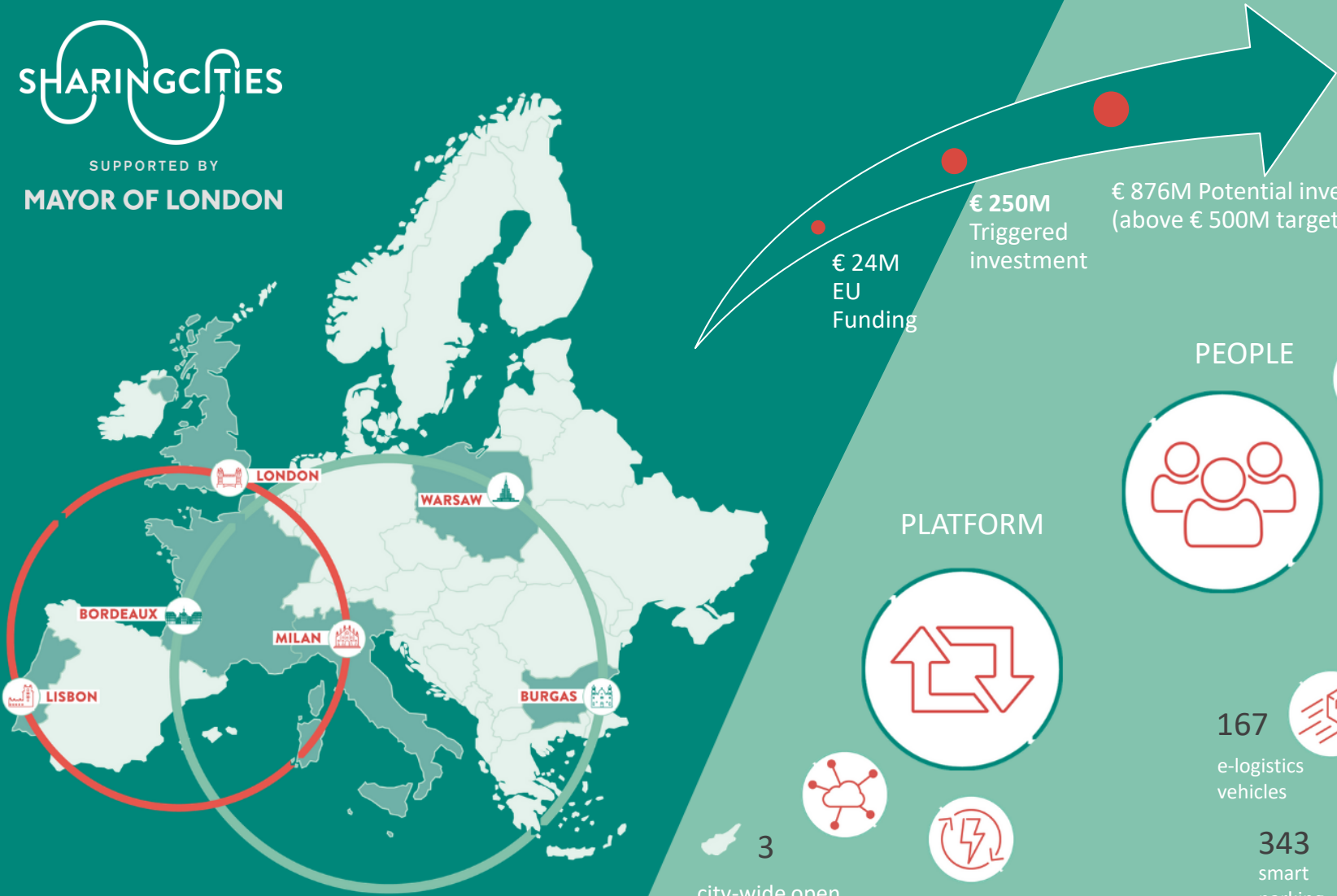
Nathan Pierce

Programme Director for Sharing Cities and Head of Smart London Team

Greater London Authority



**LONDON DATASTORE**



## PEOPLE



2,000  
users on  
digital  
social  
markets

2,000  
planned e-bikes



855  
e-bikes  
operational

## PLACE



167  
e-logistics  
vehicles



343  
smart  
parking  
spaces



113  
e-cars



311  
e-charge  
points



2,400  
smart  
lampposts



6,125,000  
kWh/y  
reduction  
in energy

## PLATFORM



3  
city-wide open  
data platforms



3  
city-wide sustainable  
energy management  
systems



# Sharing Cities: Building retrofit solutions

## SMART, LOCAL AND FAIR ENERGY SYSTEM IN THE ROYAL BOROUGH OF GREENWICH, LONDON

In London's Greenwich Peninsula ward conservation area two social housing estates underwent a deep energy retrofit.

41% of the borough's emissions come from housing, with 10% of households living in fuel poverty.

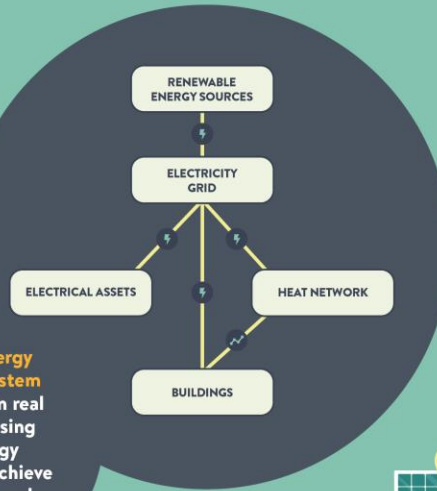
### LOCAL INTERVENTIONS

Energy efficiency fabric improvements

**Water source heat pump:** Drawing water from the Thames basin to deliver locally generated energy with lower emissions

**Sustainable Energy Management System (SEMS):** Taking in real time data and using dynamic energy management to achieve additional cost and carbon savings at a district level

**Internet of Things (IoT) technologies:** Smart thermostats, temperature, humidity and boiler sensors, and energy monitoring



## HELPING MILAN REALISE ITS VISION FOR NEAR-ZERO EMISSION DISTRICTS

In Milan, building heating systems are responsible for nearly 50% of local emissions.

In Sharing Cities' pilot area, 70% of real estate assets were attributed G-F energy class.

- Before & After: Complex Interventions**
- Photovoltaic Panels
  - Roof & facade thermal insulation
  - High-performance stairwell windows
  - LED lighting
  - Thermal regulation & thermostats
  - Heating system remote management

### CO-DESIGN PROCESS

Over 900 families & 12 co-design meetings

**DESIGN**  
Scenarios Presentation

**KNOWLEDGE**  
Sharing of energy analysis

**TRUST**  
Introduction & Listening

### IMPACT: LONDON

With Greenwich Energy Hero, residents were able to momentarily reduce their energy consumption by 80% and alleviate pressure on the grid during peak demand.

At Ernest Dence estate, the completion of the retrofit works combined with the installation of a heat pump could lead to 68% CO2 savings.

527,000kg CO<sub>2</sub>

2.4M kWh (667 homes annual usage)

Projected annual savings after retrofit works completed

### IMPACT: MILAN

60% energy reduction across entire retrofit programme.

Greater citizen awareness of retrofit impact on energy bills, environment and wellbeing.

470,000kg CO<sub>2</sub>

annual savings



# Sharing Cities: E-mobility solutions

## HOW LISBON'S BIKE SHARING SCHEME BECAME THE CATALYST FOR AN ACTIVE CYCLING CULTURE

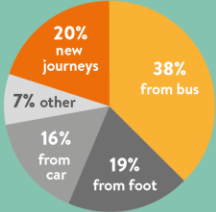
Portugal has one of Europe's lowest rates of cycling. Car ownership is traditionally very high. Lisbon is an old city with many historic districts and narrow streets. It is also very hilly. Lisbon introduced its first city-led bike sharing scheme in 2017 through Sharing Cities to help realise its new city strategy for mobility.

Upgrading Lisbon's cycling infrastructure has unlocked the city's micro-mobility network. Since 2017, 3 million journeys have been made by 16,000 users.

Daily users

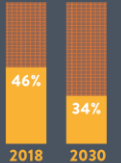


Mode shifts



## FUTURE IMPACT: LISBON

Cycling lanes expected to double to over 200km. 3-fold planned increase in bike fleet with 2,000 bikes in circulation, 80% of which will be electric.



Target reduction in private car use to 34% by 2030



## MILAN: A HUMAN-CENTRIC E-MOBILITY STRATEGY DELIVERS FIRST AND LAST-MILE MOBILITY OPTIONS ACROSS THE CITY

**Mainstreaming Mobility-as-a-Service**  
Expanding accessibility to sustainable transport has been a key priority of the Municipality of Milan.

10 mobility islands have been implemented in Milan to respond to strategic goals set by the city

**What is a mobility island?**  
A mobility island brings together multiple mobility services in one location, making it easier for people to access a range of low carbon mobility options.

### MAINSTREAMING MOBILITY-AS-A-SERVICE

150 e-bikes equipped with child seats integrated into the city's bike sharing scheme = 3,300kg CO<sub>2</sub> saved in 2019

14 new bike-sharing stations in the south-east suburbs & 60 electric vehicle charging points

9 e-vans and 2 e-cargo bikes for last-mile logistics = 39,000kg CO<sub>2</sub> saved in 2019

175 smart parking sensors for the disabled, loading and unloading, and mobility islands

## IMPACT: MILAN

Greater access to low-carbon mobility options for families. Improved access to e-mobility network for people living outside the city centre. 35km of new cycle paths planned by December 2020 beyond pilot area.

# A NETWORK OF INTEGRATED, LOW CARBON TECHNOLOGIES SHAPED BY DATA AND CITIZENS

REAL-TIME URBAN DIGITAL INFRASTRUCTURE

CO-DESIGNED WITH CITIZENS

DATA-SUPPORTED DECISION MAKING



6 million kWh/yr saved through retrofitting 15 buildings of different types. Pioneering retrofit of Lisbon's City Hall leads to...

**36%** energy savings

## DIGITAL SOCIAL MARKET

In Milan, over 2,000 people are registered on SharingMi, the peer-to-peer, eco-friendly network which encourages greener choices



The Sustainable Energy Management System (SEMS) reduces energy bills by 10%

If deployed at UK level, this could reduce emissions 30% by 2050



## TECHNOLOGY: E-BIKES

Our city-led, docked e-bike schemes have transformed the way people move around cities.

Lisbon plans to expand its bike fleet to over 2,000 - 80% will be electric.



## TECH: SHARED E-MOBILITY

We have led the way in testing mobility as a service:  
855 e-bikes operational  
167 e-logistics vehicles  
113 e-vehicles  
311 ev charging points  
343 smart parking spaces



## ENVIRONMENTAL BENEFITS

Accelerate efforts to decarbonise cities

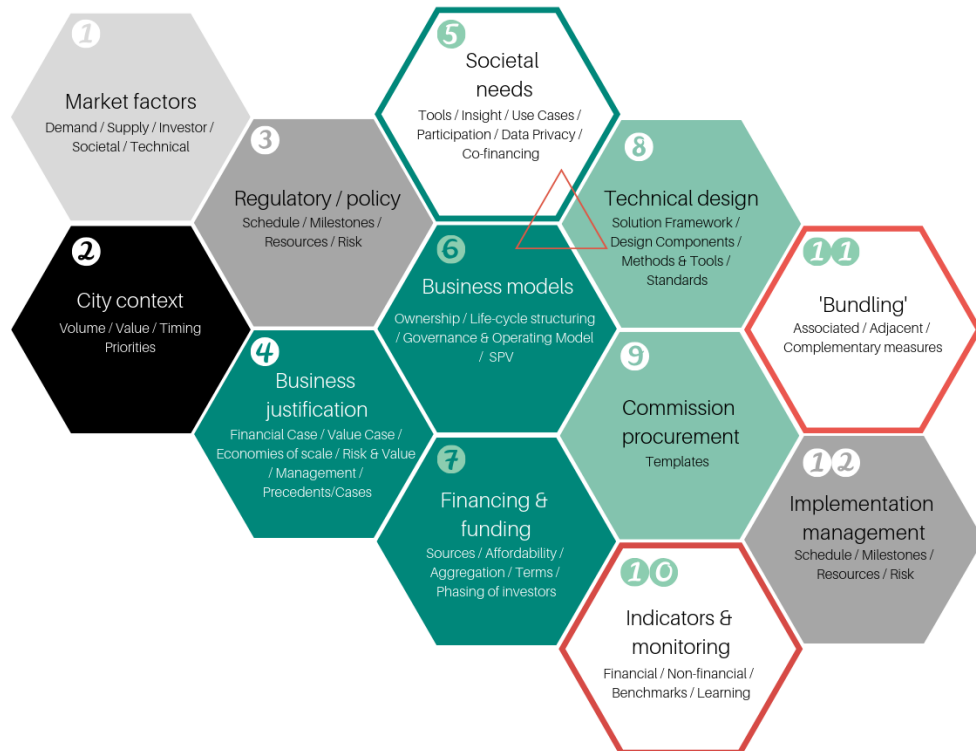
## SOCIETAL BENEFITS

Create better places to live, work & play

## ECONOMIC BENEFITS

Stimulate the smart city marketplace

# Packaging framework & playbooks



**SHARINGCITIES**

**Engaging communities to encourage behaviour change: Digital Social Market**

We tested the digital social market (DSM) in our three lighthouse cities of Lisbon, London and Milan. The DSM is a new way to engage citizens, developed by Future Cities Catapult. It has both online and offline components – so online is used to trigger different behaviour offline using rewards. The overall aim is to increase uptake of sustainable smart city services.

**Why should you care?**  
To solve problems around air quality, material consumption, transport and energy use, cities must change. They need to lead on green issues and bring their citizens with them. As such, it's vital for city authorities, businesses and citizens to have a closer dialogue. The DSM is one way to enable this.

**Benefits of the DSM**  
The DSM allows cities to explore and experiment with citizen participation. The benefits include:

- Raise awareness of and enable smart city services (like cycling and EV use)
- Harness citizens' enthusiasm to drive change
- Increase positive behaviour
- Environmental, economic, social and health benefits
- Improve inclusion through information sharing

# The Challenges

We want to tackle the major challenge of net zero economic growth

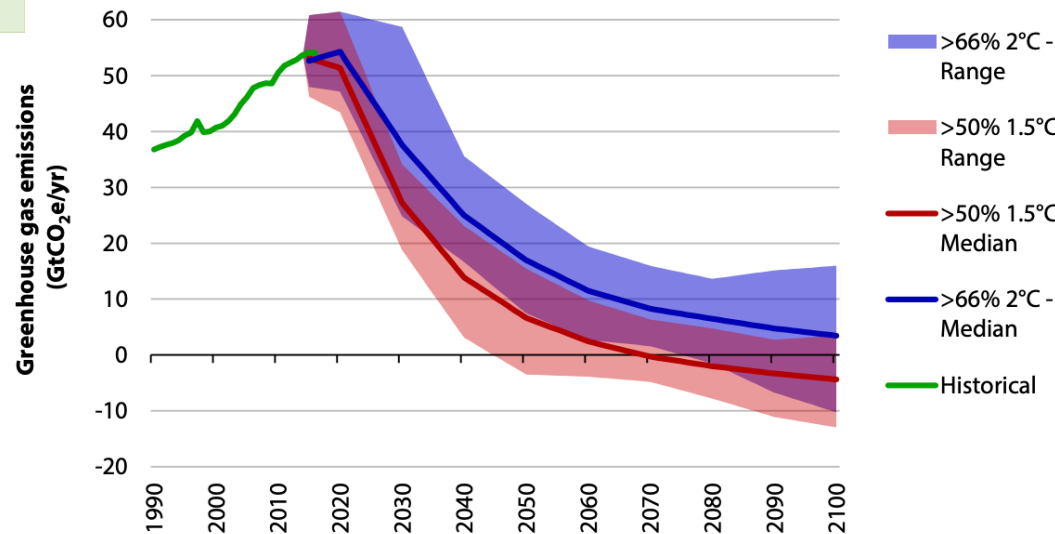
## Fragmentation and scale

London's fragmentation (33 boroughs, 10 pan-London agencies etc) makes it hard to collaborate and achieve scale.



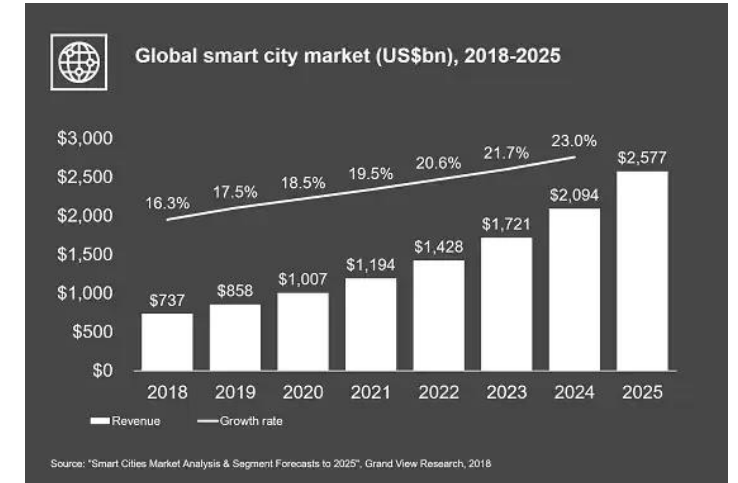
## Carbon reduction

We need to repeat the reduction in carbon emissions in 2020 caused by COVID-19 **EVERY YEAR** until 2050. This will **NOT** happen without predictive analytics and optimisation.



## Foundations for growth

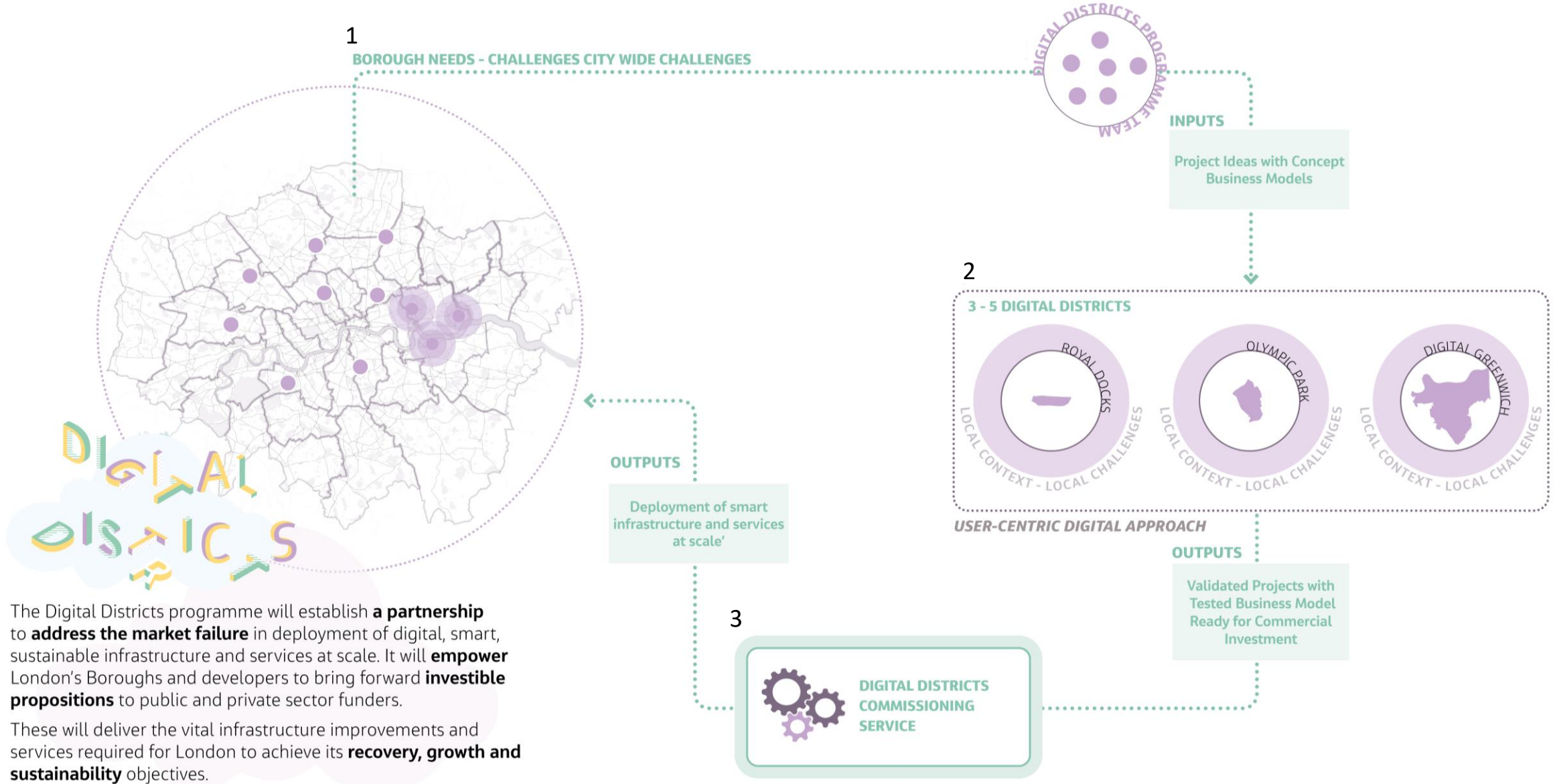
Potential for growth in smart cities is significant, but it's not a market that we encourage or invest in sufficiently.



Source: "Smart Cities Market Analysis & Segment Forecasts to 2025", Grand View Research, 2018



# Digital Districts Concept – building on a proven model



The Digital Districts programme will establish a **partnership** to **address the market failure** in deployment of digital, smart, sustainable infrastructure and services at scale. It will **empower** London's Boroughs and developers to bring forward **investible propositions** to public and private sector funders.

These will deliver the vital infrastructure improvements and services required for London to achieve its **recovery, growth and sustainability** objectives.

SHARINGCITIES

SUPPORTED BY  
MAYOR OF LONDON

@CitiesSharing  
sharingcities.eu  
Nathan.Pierce@london.gov.uk



Horizon 2020  
European Union funding  
for Research & Innovation