



Lifeboats

(Almost) **200 Years of Data at the RNLI**

Sam Prodger

Head of Data Operations and Applications

The RNLI: The charity that saves lives at sea since 1824.



The RNLI in Numbers (2021 figures)



95%

of RNLI people
are volunteers



53,665

people rescued



408

lives saved



191

animals
rescued



1.72M

Average weekly
viewers of RNLI TV
shows

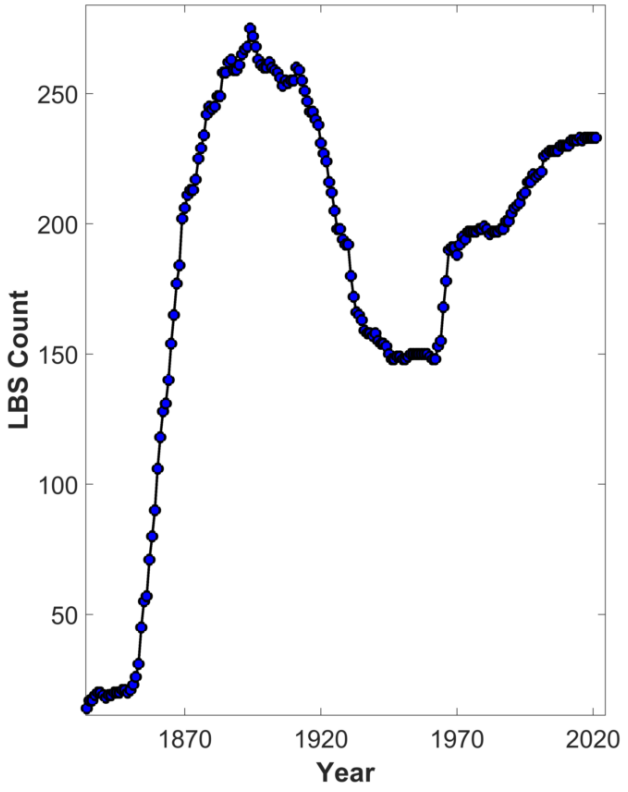


27.5M

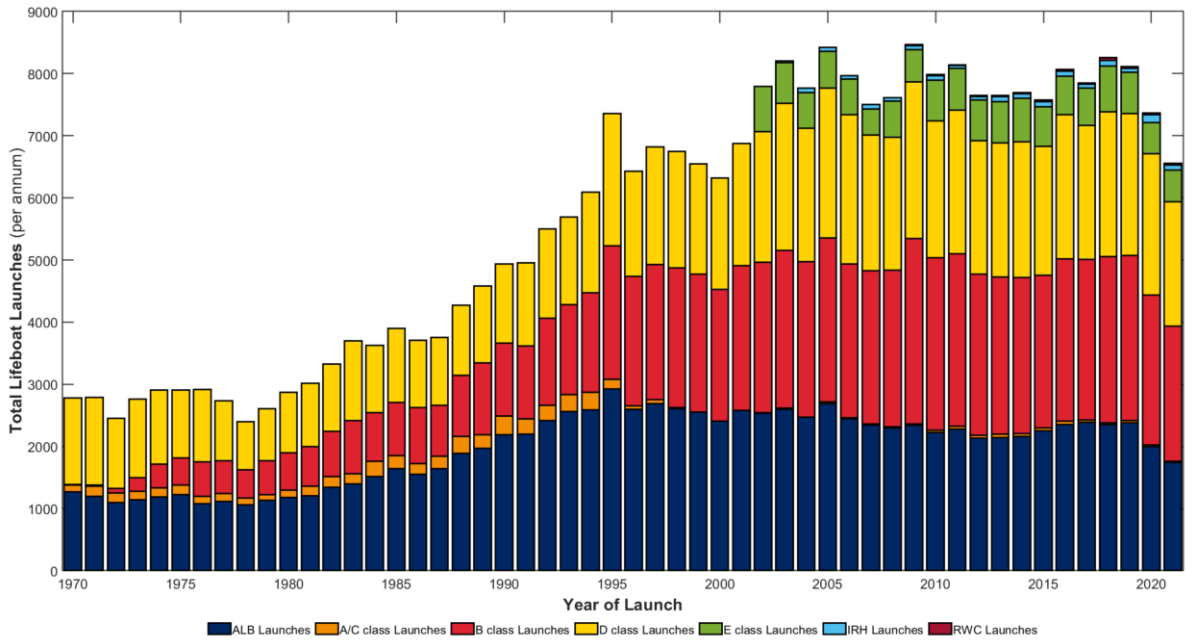
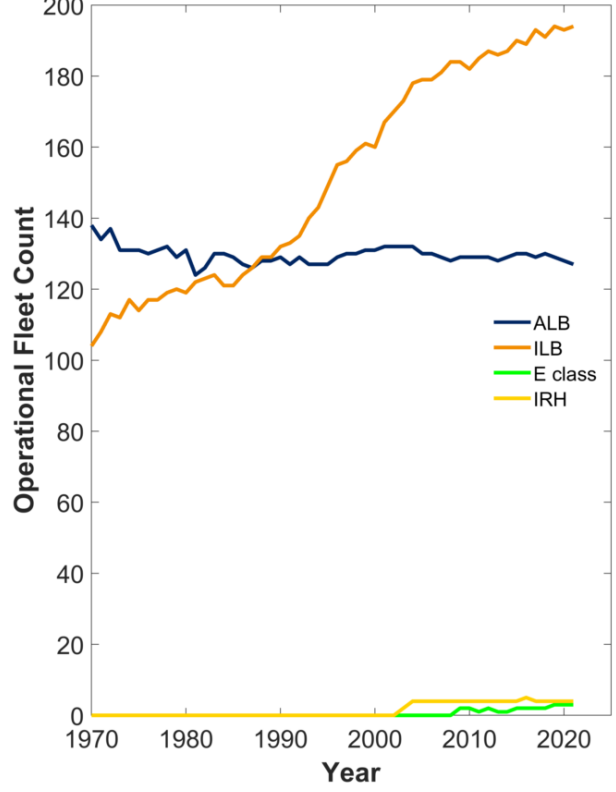
People reached
with water safety
messages

Exploring the RNLI through Data

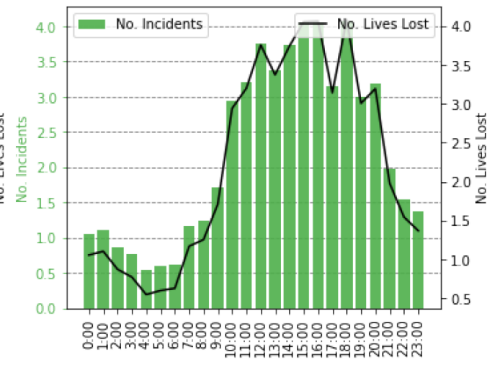
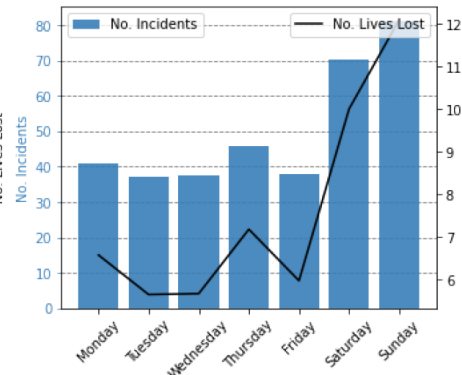
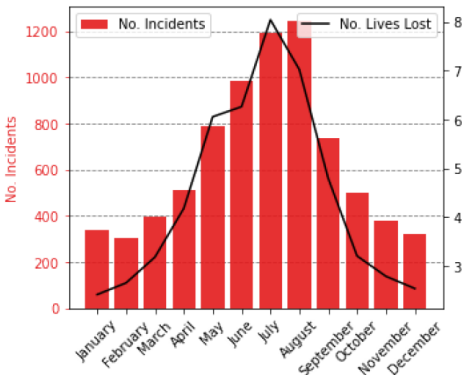
Lifeboat Stations since 1825



Lifeboat Fleet since 1970



Monthly average Daily average Hourly average



Our Lifeboats and with them, our ability to collect and utilise data has evolved over the years to become the modern-day data-driven service

Our Lifeboats and with them, our ability to collect and utilise data has evolved over the years to become the modern-day data-driven service

1785 –
The first
lifeboats



THE "ORIGINAL" LIFE-BOAT
LENGTH 30'-0" BEAM 10'-0"
BUILT BY HENRY GREATHEAD
OF SOUTH SHIELDS IN 1785

Our Lifeboats and with them, our ability to collect and utilise data has evolved over the years to become the modern-day data-driven service



1972 –
RIBs
introduced

2002 –
Lifeboat
on the
Thames



2001 –
Lifeguard
Service

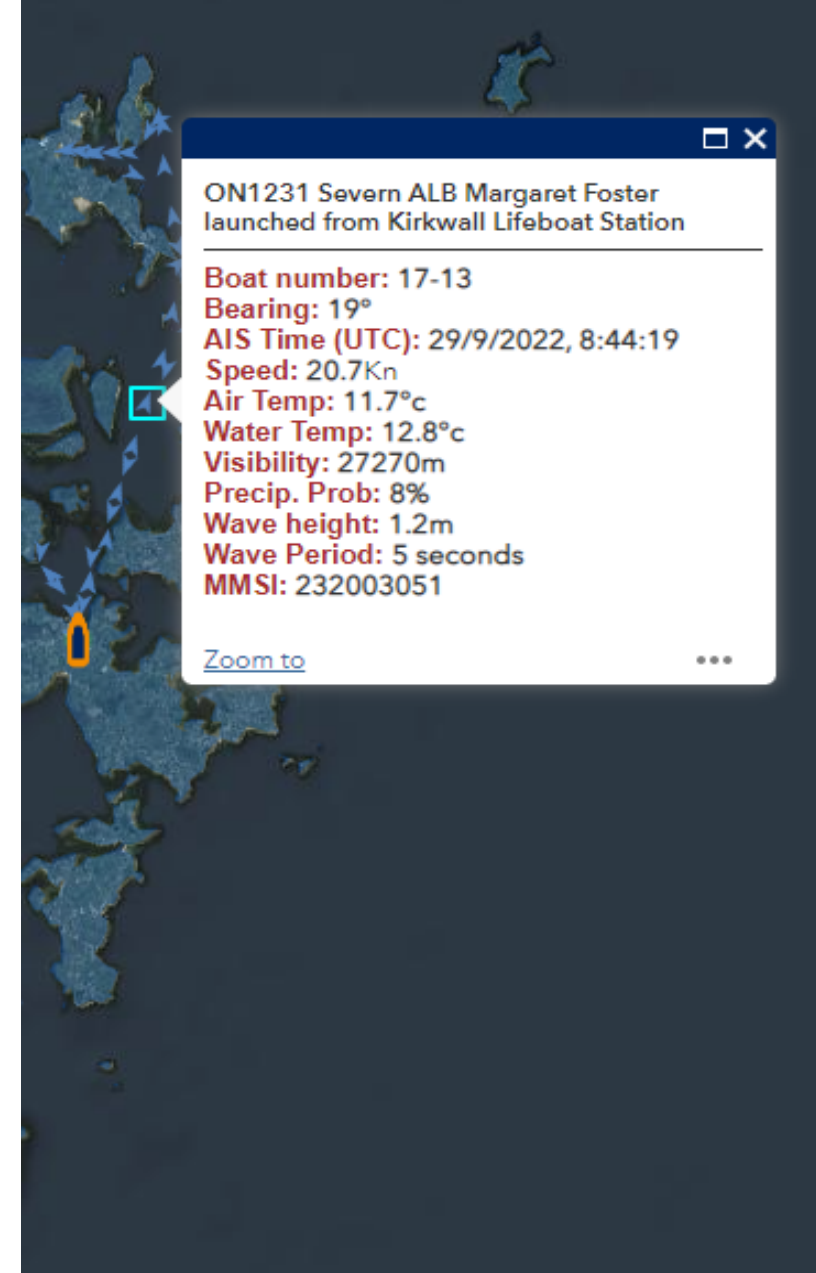
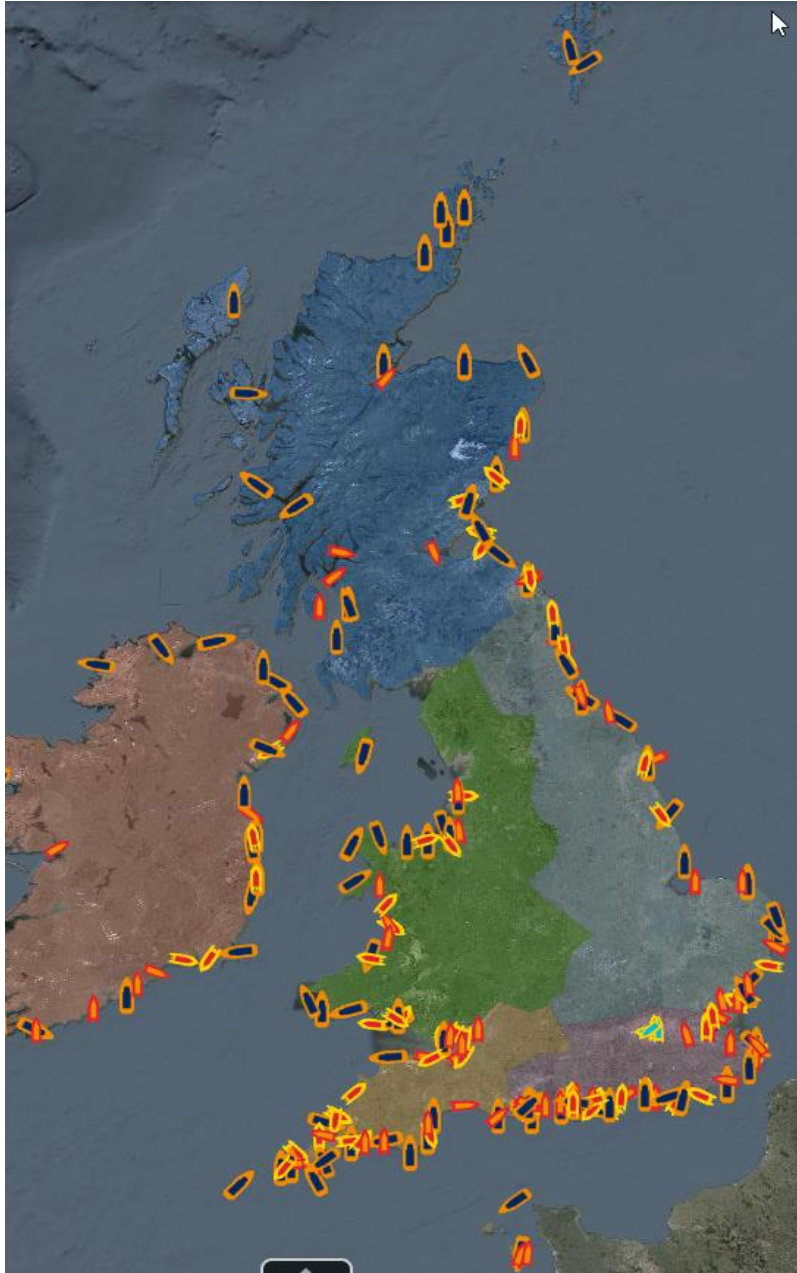
2017

Our Lifeboats and with them, our ability to collect and utilise data has evolved over the years to become the modern-day data-driven service



**2017 –
Shannon
enters
the fleet**

But what does this mean for RNLI Data analytics?

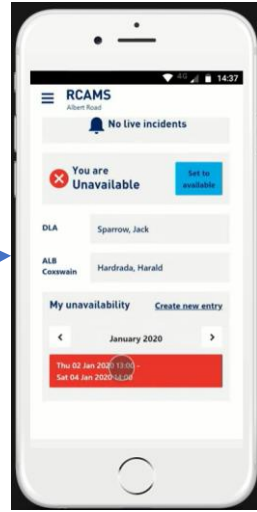


Improving our paging system to get real-time insights

The 1800s – 1990s



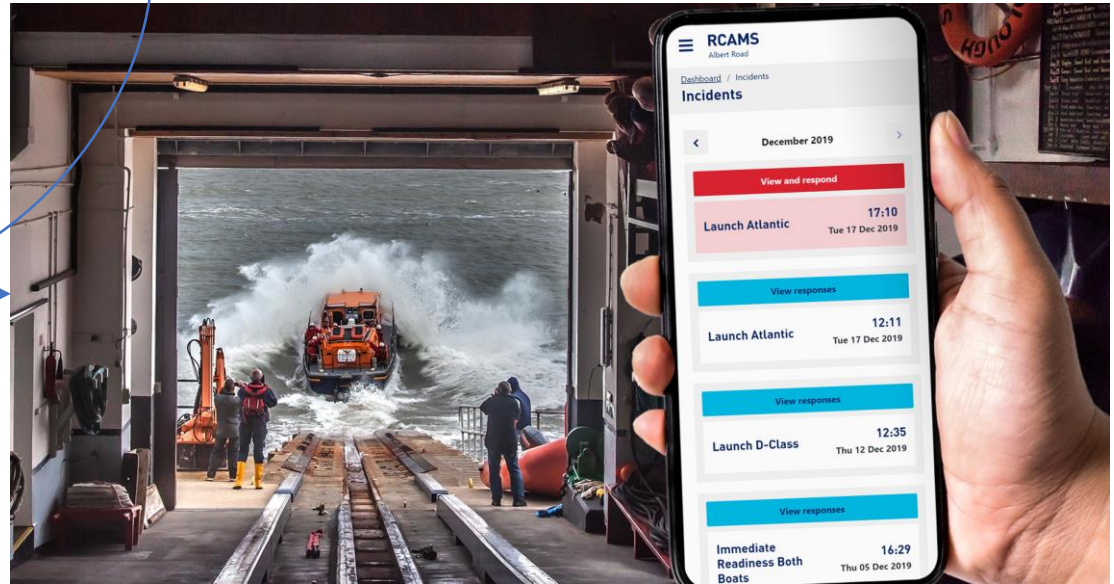
Howth Coxswain in 1944 firing an explosive maroon to alert the crew



2017 – Present. Smartphone App to support pagers and enrich data



1990s – Present. The RNLi Pager



And our predictive capabilities to save the most lives

LIST OF BOATS BY THE ORDERED
 ABERDEEN NO.2 LIFE-BOAT
 OF THE
 ROYAL NATIONAL LIFE-BOAT INSTITUTION.
 THE "ROBERT AND ELLEN ROBSON" Life-Boat
 sent to this Station in January, 1925,
 having been previously stationed at Tramore,
 Co. Waterford. The cost of this boat was defrayed
 from the legacy of the late M^r. ROBERT ROBSON,
 of Redhill, Surrey.

LIVES RESCUED
 FROM SHIPWRECK

1928.
 OCT-25. H. M. DRIFTER, LUNAR BOW. LANDED 2.
 1930.
 JAN-22. STEAM TRAWLER, JOHN G. WATSON, OF NORTH SHIELDS, 10.
 1930
 APRIL-2 STEAM TRAWLER, GLEN CLOVA, OF ABERDEEN, 1.
 1937
 JAN. 25 RESIDENTS OF WATERSIDE FARM, LOWER DEESIDE
 RESCUED FROM FARMHOUSE, SURROUNDED, OWING TO
 THE FLOODING OF THE RIVER DEE. 3

THE "GEORGE AND ELIZABETH GOW" motor life-boat
 sent to the station in October, 1939. The cost
 of this boat was defrayed by the legacy of M^{rs}
 Elizabeth Gow, of Upper Clapton, Middlesex.

THE "GEORGE AND ELIZABETH GOW" motor life-boat
 was requisitioned by the Air Ministry in August, 1943,
 for service in the Azores and was replaced by the



IWM

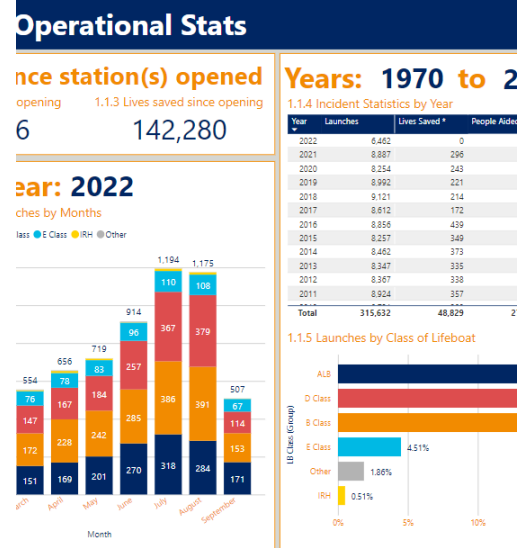
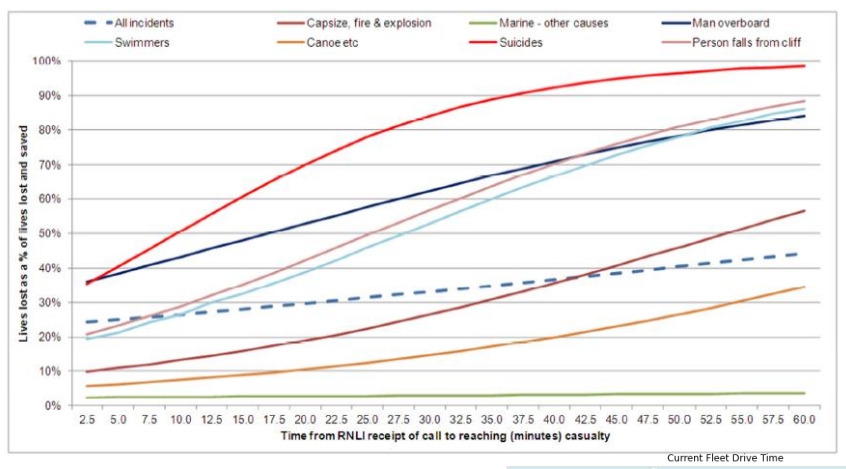


Figure 1: Predicted probability of death for a selection of incident types, for range of time to reach casualties



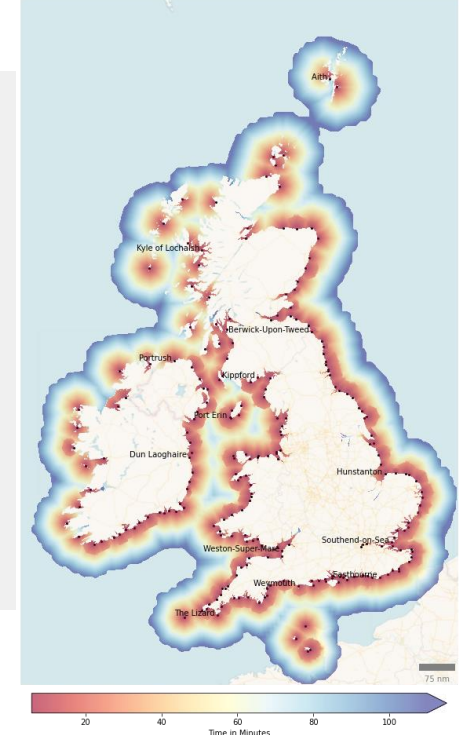
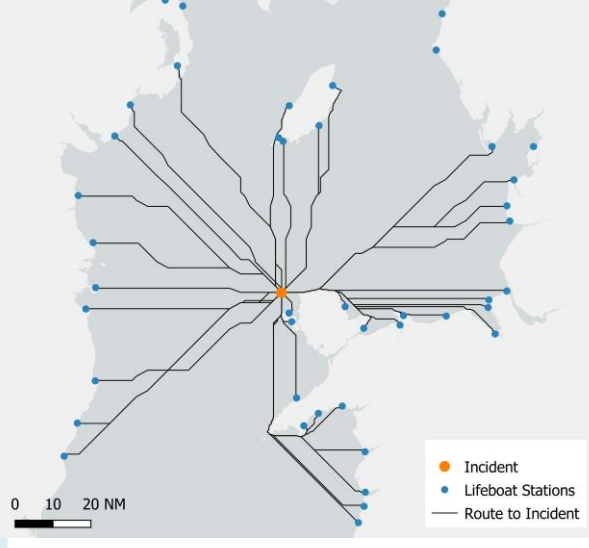
Report: Station Operational Statistics

Date from: 01/01/2022 Date to: 03/10/2022

Lifeboat Station: Montrose Lifeboat Station Report Type: Both

Station Operational Statistics - Montrose Lifeboat Station

Montrose Lifeboat Station	Jan 1 2022 12:00AM - Oct 3 2022 11:59PM
Lives Saved	1
Total People Aided	1
Afloat Exercises	14
Shoreside Exercises	
Montrose Lifeboat Station	Jan 1 2022 12:00AM - Oct 3 2022 11:59PM



Data and our data literacy has significantly advanced in recent years and we are utilising this to save lives

1824

→ 2022

ROYAL NATIONAL LIFEBOAT SOCIETY
 THE ROBERT AND ELLEN ROSS
 sent to this station in January 1824, having been previously stationed at Co. Waterford. The cost of this boat was £100 from the legacy of the late Mr. Ross of Reithill, Surrey.
 1928
 OCT. 25. H. M. DRIFTER, LUNAR BOW, LANDED
 1930
 JAN. 22. STEAM TRAWLER JOHN G. WATSON OF NORTH SHIELDS,
 1930
 APRIL - 2. STEAM TRAWLER, GLEN CLOVA OF ABERDEEN,
 1937
 JAN. 25. RESIDENTS OF WATERSIDE FARM, LOWER DESIDE, RESCUED FROM FARMHOUSE, SURROUNDED, DURING THE FLOODING OF THE RIVER DEE.
 THE "GEORGE AND ELIZABETH GOW" motor life-boat sent to the station in October, 1939. The cost of this boat was defrayed by the legacy of Mrs. Elizabeth Gow, of Upper Clapton, Middlesex.
 THE "GEORGE AND ELIZABETH GOW" motor life-boat



Report: Station Operational Statistics

Date from: 01/01/2022 Date to: 03/10/2022

Lifeboat Station: Montrose Lifeboat Station Report Type: Been

Station Operational Statistics - Montrose Lifeboat Station

		D-Class	Shannon
Montrose Lifeboat Station	Jan 1 2022 12:00AM - Oct 3 2022 11:59PM	4	4
Lives Saved		0	1
Whole Aided		0	0
Incidents		14	38





But what's next?



Lifeboats

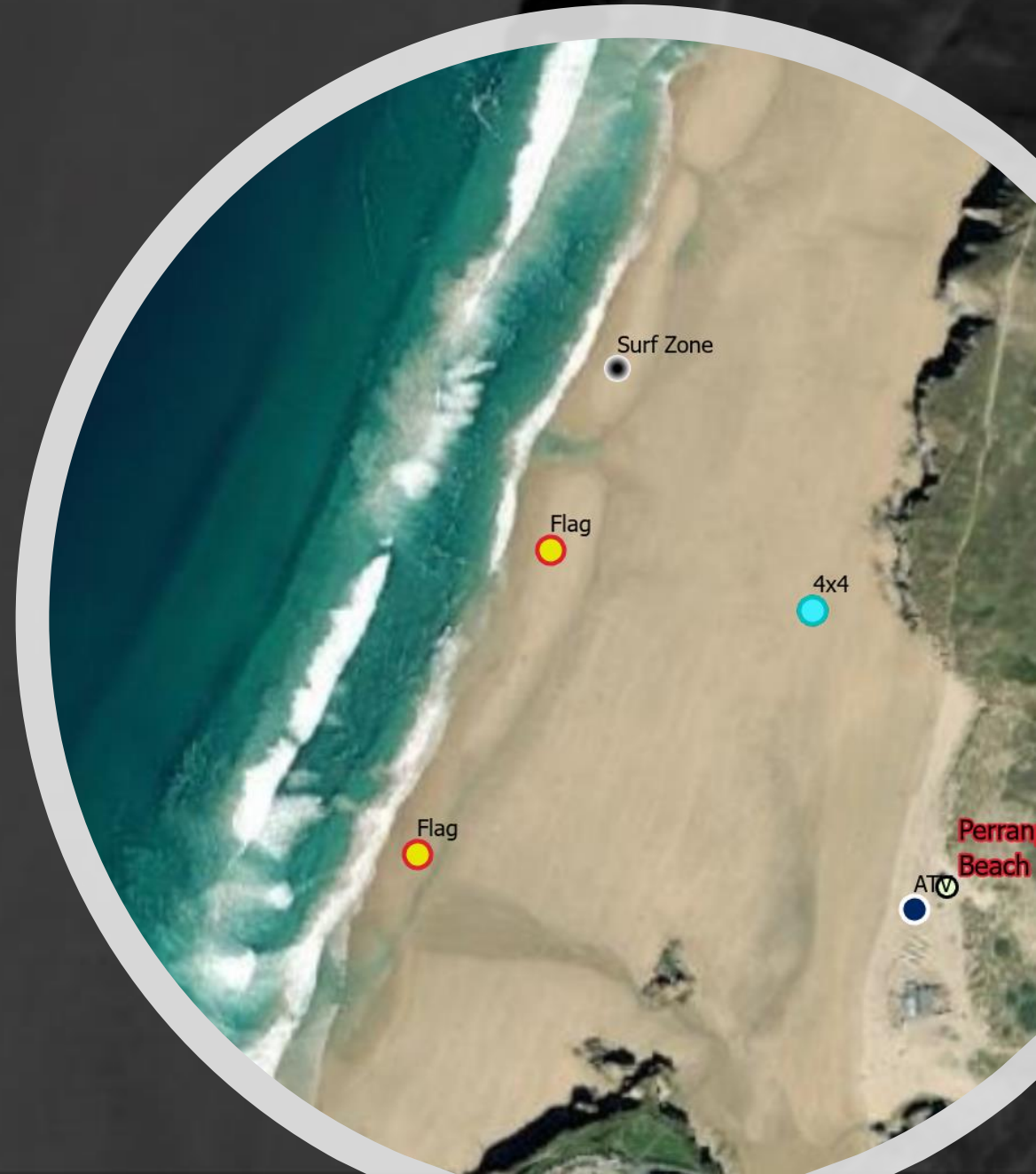
Looking Forward to what's next: Digitising our Beaches

Looking Forward to what's next: Digitising our Beaches

And how we track our Search and Rescue Equipment across beaches

Small, solar-powered GNSS trackers to capture live locations of flags and assets from our lifeguarded beaches

Can pick out a Red Flag and push to RNLI.org to direct people to an open beach



RED FLAG

ATV

Perran Beach

ATV



We are also passionate about giving back to the wider analytical community via our Open Data repository, powered by ArcGIS Hub, which is available for public use under a creative license for not-for-profit reasons. Access this at:

- <https://data-rnli.opendata.arcgis.com>



THANK YOU



Lifeboats