



UK Cybercrime Policing Cyber Resilience for Business

Detective Superintendent Martin Peters



National
Cybercrime
Programme



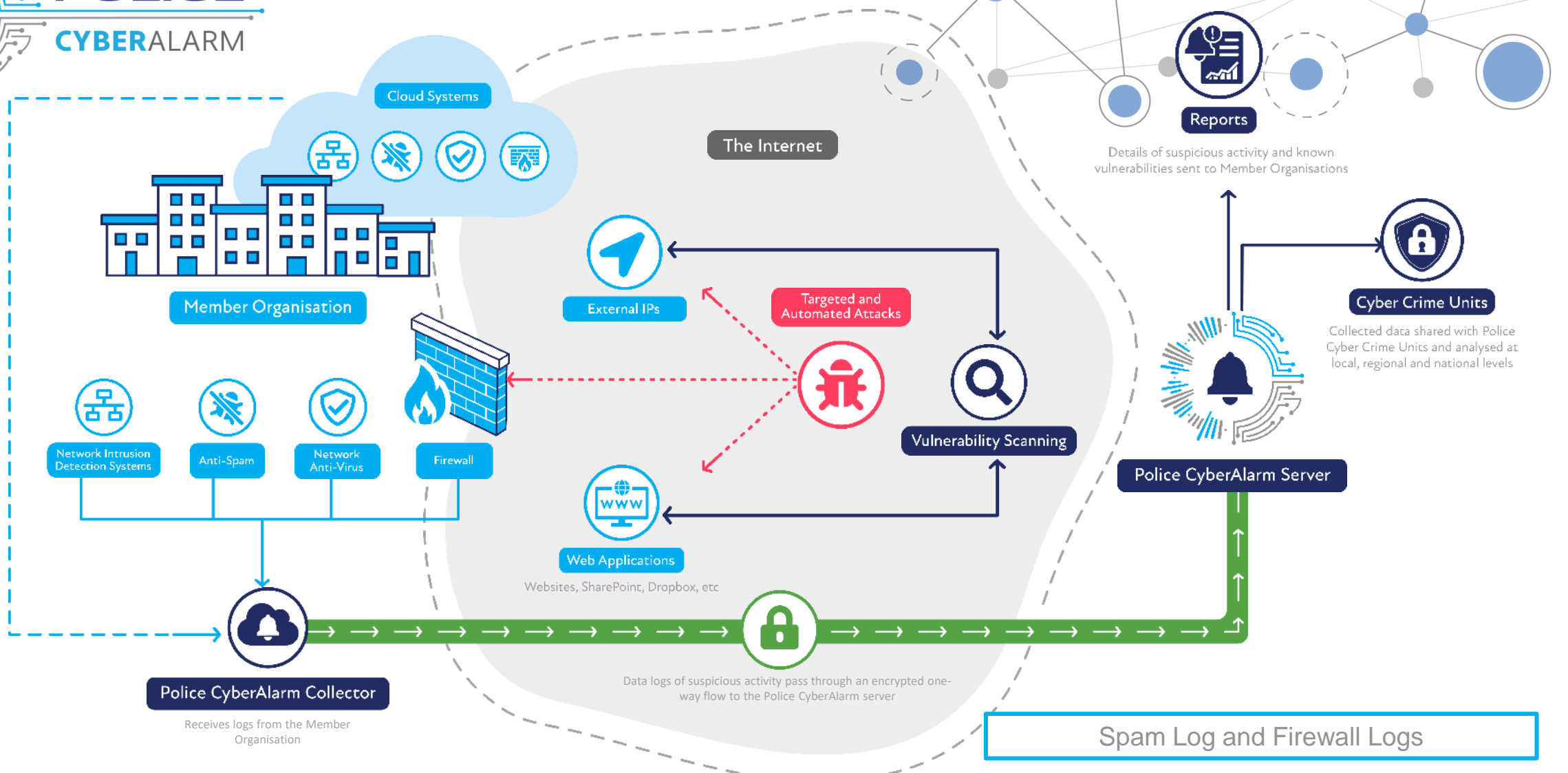


“To provide policing with a more comprehensive picture of the cyber threat landscape, inform cyber defence strategy and collect evidence that can be used in the identification, pursuit and prosecution of Cyber Criminals.”



National
Cybercrime
Programme





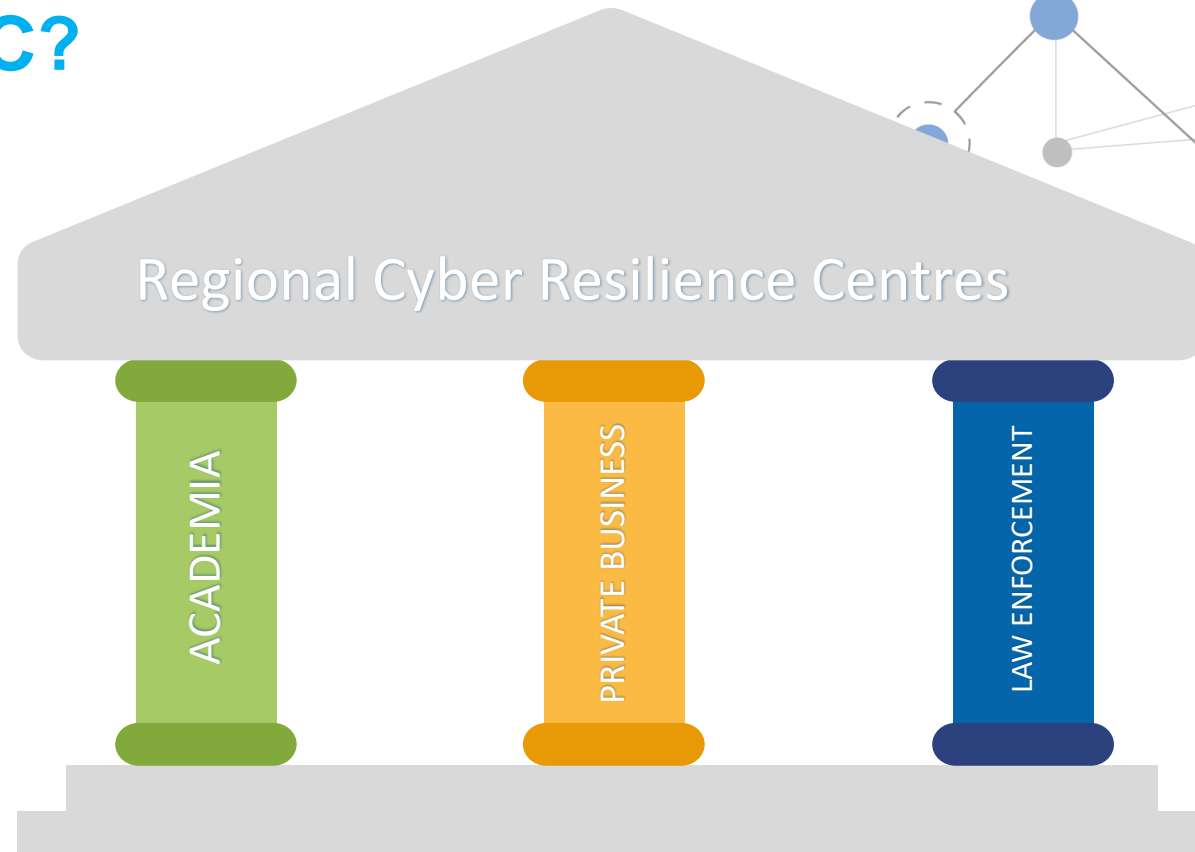


THE
**CYBER
RESILIENCE
CENTRE**



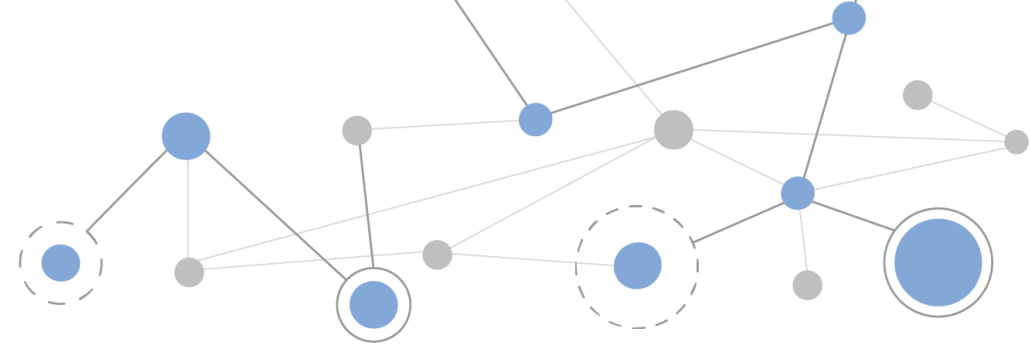
National
Cybercrime
Programme

What is a CRC?



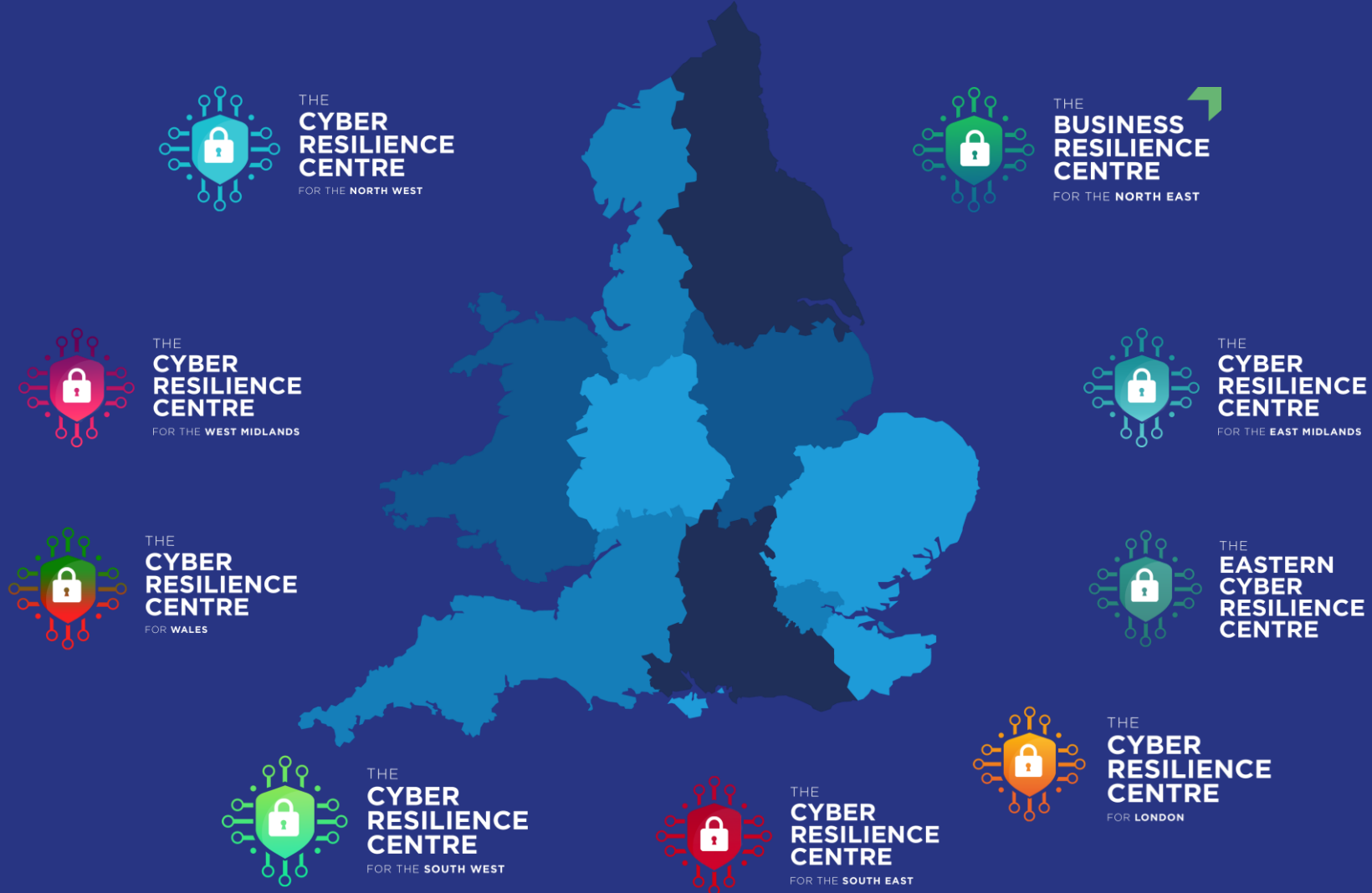
Trust and Confidence

Cyber Resilience Centre Network Plan



- Promote the importance of cyber resilience across the business and third sector communities
- Promote CRC engagement for Ambassadors' SME supply chains and customers
- Support the long term sustainability and development of the CRC Network
- Support the development of the student talent pipeline via CyberPATH
- Facilitate private sector strategic engagement with national policing
- Become a respected national player informing the UK cyber agenda

Regional CRC network



Founding National Ambassadors



NatWest
Group



THE VERY GROUP



In advanced discussion with:

Microsoft, Lockheed Martin, Haleon, PA Consulting, Jacobs, Whitbread, BDO, EY, Mastercard, Amazon, Royal London

