

Shaping the future of digital technology in health and social care

David Maguire, Senior Analyst

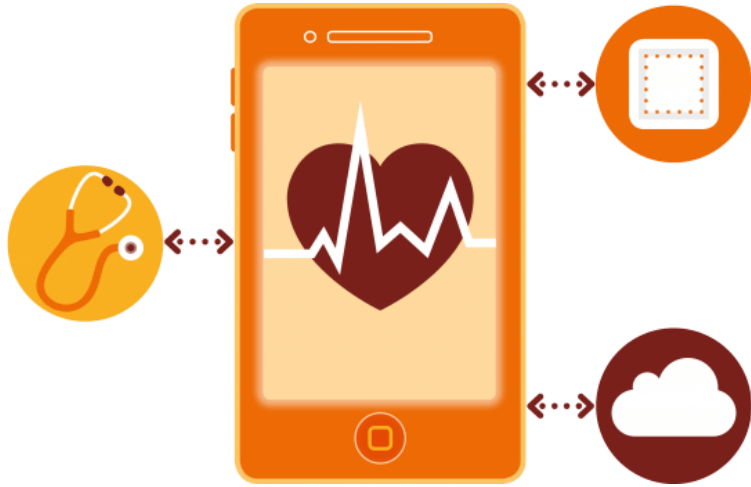
The King's Fund

Shaping the future of digital technology in health and social care

David Maguire
Matthew Honeyman
Deborah Fenney
Joni Jabbal

April 2021

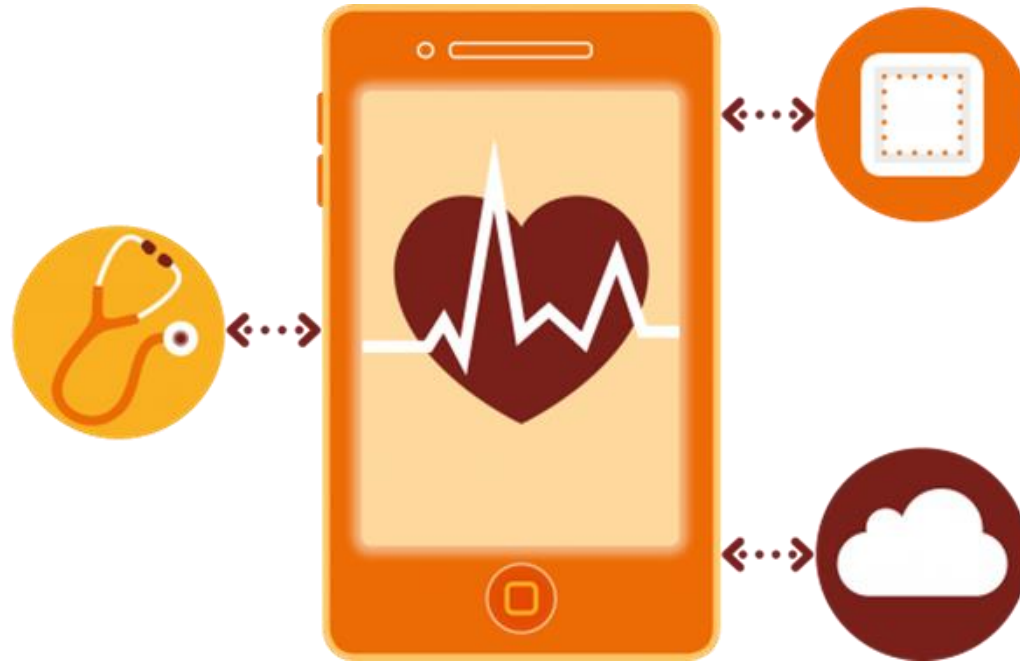




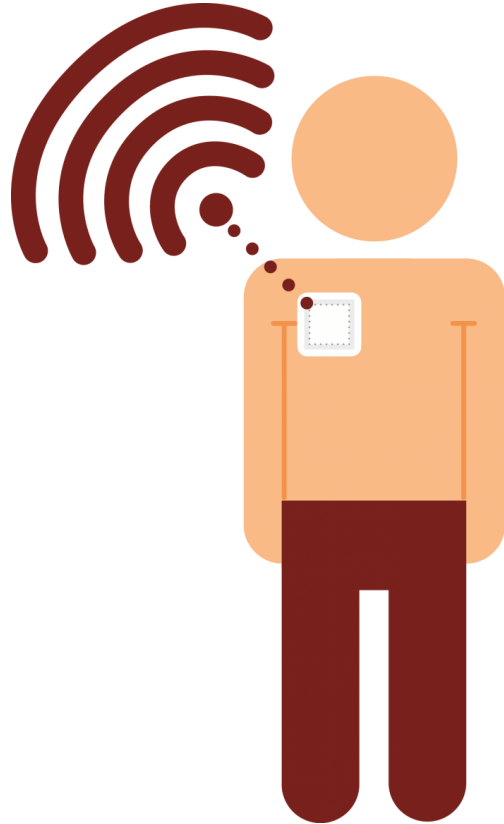
Artificial intelligence



Mobile computing



Personal and wearable technologies



Internet of things





Looking into the future

Three main scenarios:

1. A health “techlash”
2. A willing system, with uneven spread
3. Spread and scale at pace

Table 3 Levels of public trust and capacity and capability in our three scenarios for the future trajectory of digital technologies in health and care

	Scenario 1: a health 'techlash' ¹	Scenario 2: a willing system with uneven spread	Scenario 3: spread and scale at pace
Public trust	Low	High	High
Capacity and capability	Low	Mixed	High

Recommendations

Probably the most relevant recommendations for this audience:

- Build capability for continuous adaptation and improvement, using technology in practice by embedding change management processes in digital leadership development schemes and supporting the enhancement of digital skills as part of continuing professional development throughout the health and care system
- Support methodological development to overcome the challenges of evaluation and help generate data to support this while being realistic about the likelihood of cost savings as opposed to productivity increases.
- Build trustworthy systems of data based on an active understanding of public expectations for the use of their data with clear communication of potential use.
- Invest in tools and programmes to answer some of the outstanding questions regarding the effect of digital exclusion on health, address exclusion in local populations and monitor the changing nature of digital exclusion

Thank you

David Maguire, @dpjsmaguire, d.maguire@kingsfund.org.uk

www.kingsfund.org.uk