



BIRMINGHAM  
CHILDREN'S TRUST



# Birmingham Children's Trust & Sentinel Partners: Improving Lives through Integrated Data Insights

[helena.zaum@sentinelpartners.co.uk](mailto:helena.zaum@sentinelpartners.co.uk)

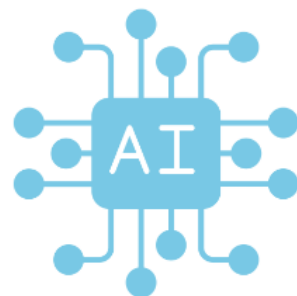
**Improving lives through  
trusted data insights**

sentinel  
partners 

# What we do



We help public sector organisations get faster value from their data, and data from their agency partners



We get your data ready for your AI journey



We have deep industry specialism around highly sensitive use cases and information governance



## Health details

Mental health status  
Substance misuse etc



## Personal details

DOB, address, interests



## Social care info

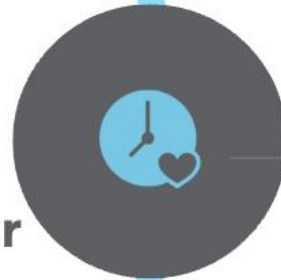
Social worker,  
last assessment,  
gang membership,  
missing episodes



## Single View (s) of Young Person e.g. for social worker

## School/NEET

Attendance,  
academic performance,  
mental health support



## Police & youth justice

Previous convictions,  
persons of interest




## Household info

Parents/carers, financial information,  
issues of concern e.g. domestic violence



# Sentinel Platform

Ingest any type of data  
(from different sources)



Clean, validate and match data


Name	Date of Birth	Address
John Smith	25/08/1984	34 Oakland Avenue
John Barry Smith	25/08/1984	34 Oakland Avenue
John B. Smith	25th Aug '84	34 Oakland Avenue

'Golden record'  
(Best available info)

Name	Date of Birth	Address
John Smith	25/08/1984	34 Oakland Avenue

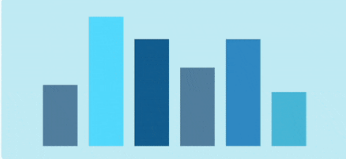



Profiling: Eligibility/Outcome & AI



Share Insights

5260 Users	84 Validations	3240 Matches
---------------	-------------------	-----------------

# Example use cases



Predicting looked after children

Predicting perpetrators of domestic abuse

Identifying financial & other vulnerabilities

Multi-agency safeguarding/MASH

Supporting Families 3



Identifying unpaid carers & likely breakdown

Prioritising those waiting for assessments

Preventing escalations e.g. falls

Single view of care tech devices

Anticipating provider quality & financial risk



Coordinated hospital discharge

Single view of med tech devices

Family hubs - care coordination

Admission avoidance

Multi agency approach to population health

**Visibility of individuals across multiple data sets: issues identified earlier**

**Much improved multi-agency collaboration: improved outcomes for individuals and their loved ones**

**Easy to demonstrate compliance & manage inspections (e.g. Ofsted)**

**Elastic data platform which can support many different areas of priority**

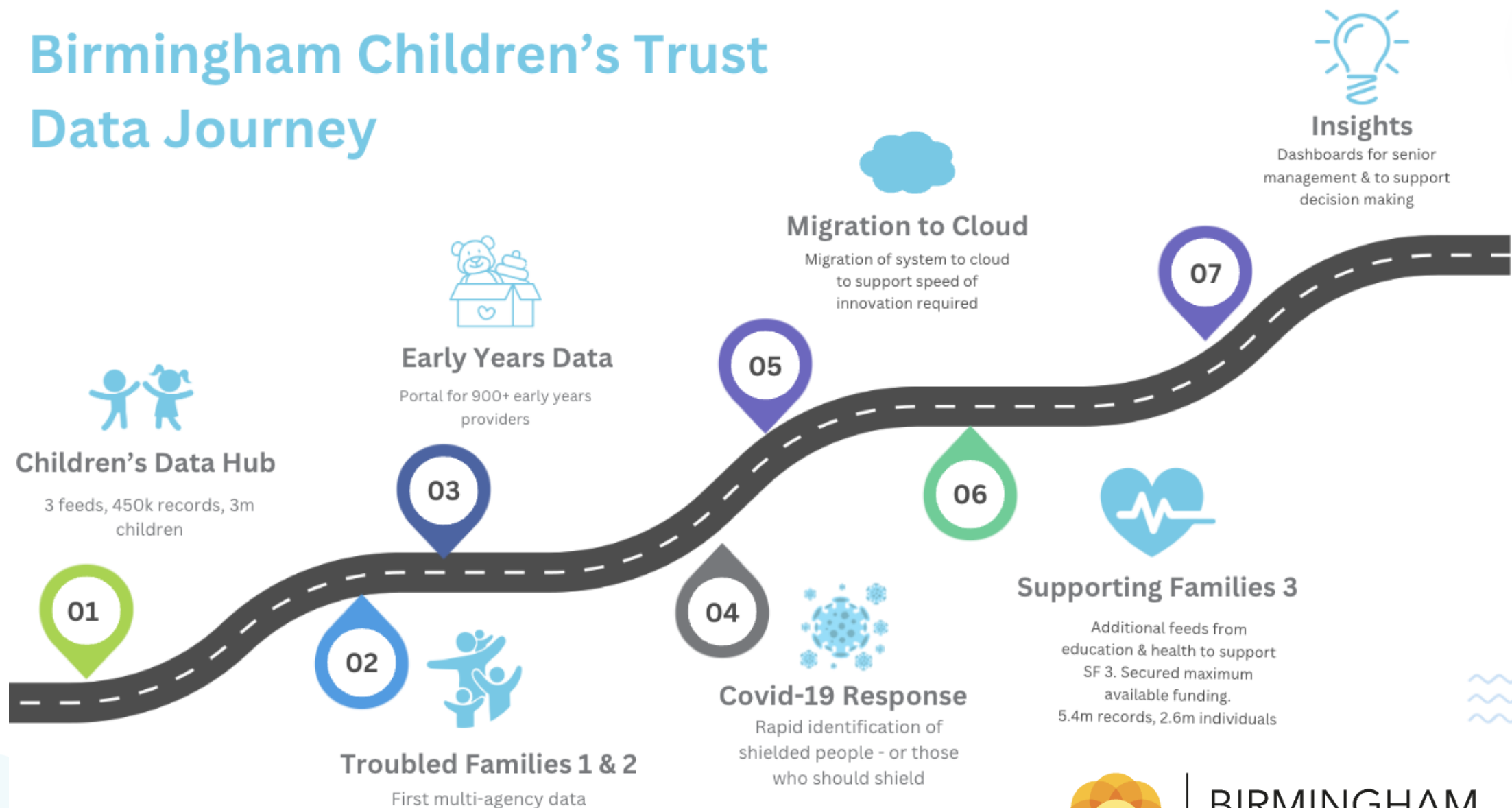
## **Outcomes**



# Dan Taylor, Birmingham Children's Trust



# Birmingham Children's Trust Data Journey



**BIRMINGHAM  
CHILDREN'S TRUST**



# Benefits

## **Full draw down on government funding**

Ability to evidence both interventions and improved outcomes for children and families

## **Holistic approach to service delivery**

A joined up approach to how services are delivered to children and families

## **Improved multi-agency coordination**

It's much easier to work with other place based partners as everyone has access to good data

## **Improved data quality and insights**

Our data quality has improved and we are much better prepared for innovation and AI



## Lessons learned

Start small, build over time

Engage IG early & bring them  
along with you

Start with the outcome in mind

Don't underestimate the level of  
business & cultural change  
needed to become data-led

Be prepared for changes to  
practice as insights emerge

Digital Economies Act 2017



BIRMINGHAM  
CHILDREN'S TRUST



# Future Plans